

MY MAMMOGRAM TOOLS



American Indian
Cancer Foundation.



Gown

A criss-cross mammogram gown which is open in the front will be provided. You will be asked to remove your clothing from the waist up.

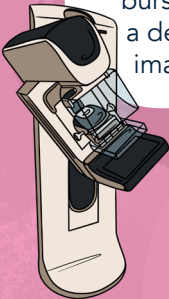
Mammography Technologist

During your mammogram, you will have a mammography technologist that will explain the procedure to you, help to position you (and your breast). Once you have been positioned, the mammography technologist will move over to the display and review the image to be sure that the images are clear so they can be read by the physician.



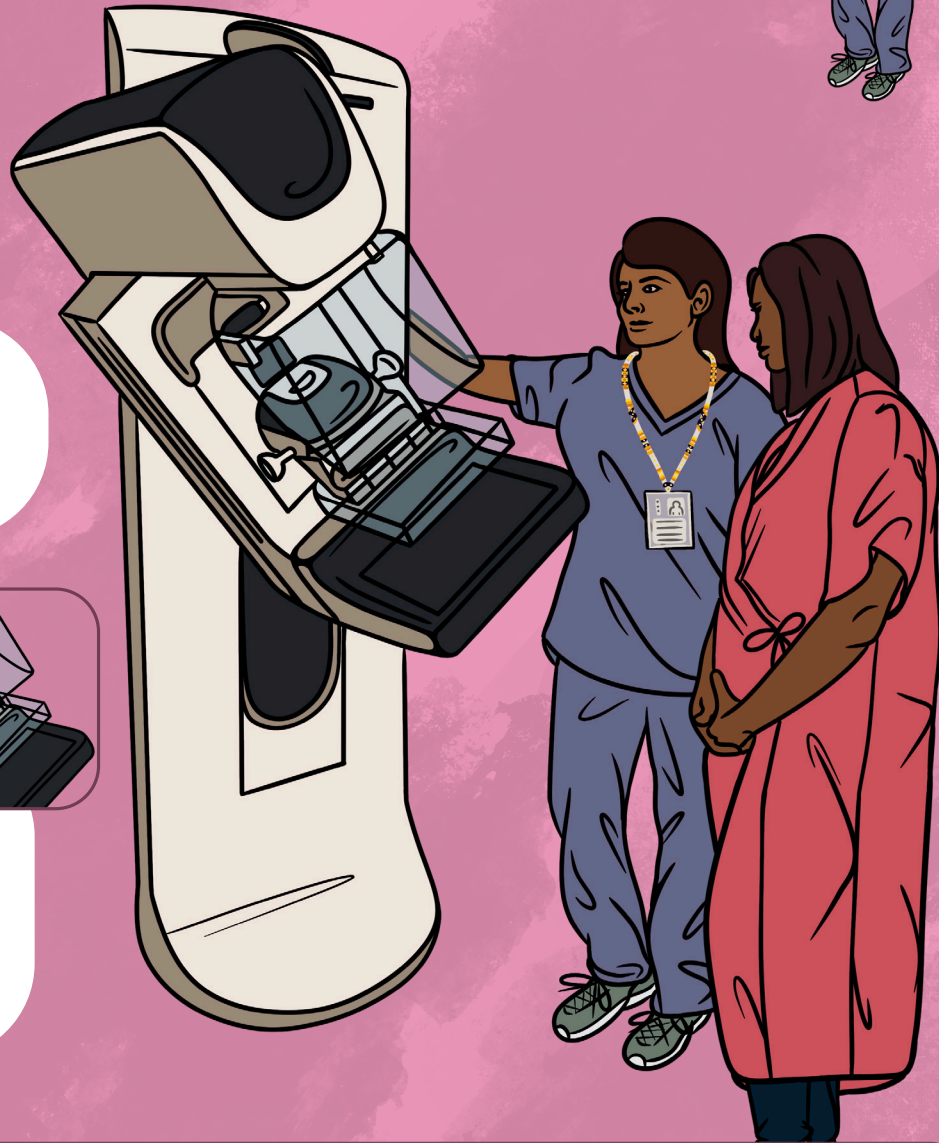
Mammogram Machine

The mammogram machine produces a small burst of x-rays that pass through the breast to a detector located on the opposite side. The images produced are called mammograms.



Compression Paddle

The mammogram machine has two compression plates that hold the breast in place to minimize blurring of the X-ray image that can be caused by patient motion. Also, compression evens out the shape of the breast so that the X-rays can travel through a shorter path to reach the detector.



Breast cancer mortality rates are 8% higher in AI/AN individuals than in Non-Hispanic White individuals despite lower incidence and the availability of early detection tests. It is recommended that women undergo regular screening mammography for early detection of breast cancer.



For more
information visit:
AICAF.org